

DOM LO

STUDIOS





www.domlostudios.com

ciao@domlostudios.com

DOM LO
STUDIOS

POMPEII II MIRROR

List Price:

\$1,925

Materials:

Burnt Ash & Plaster

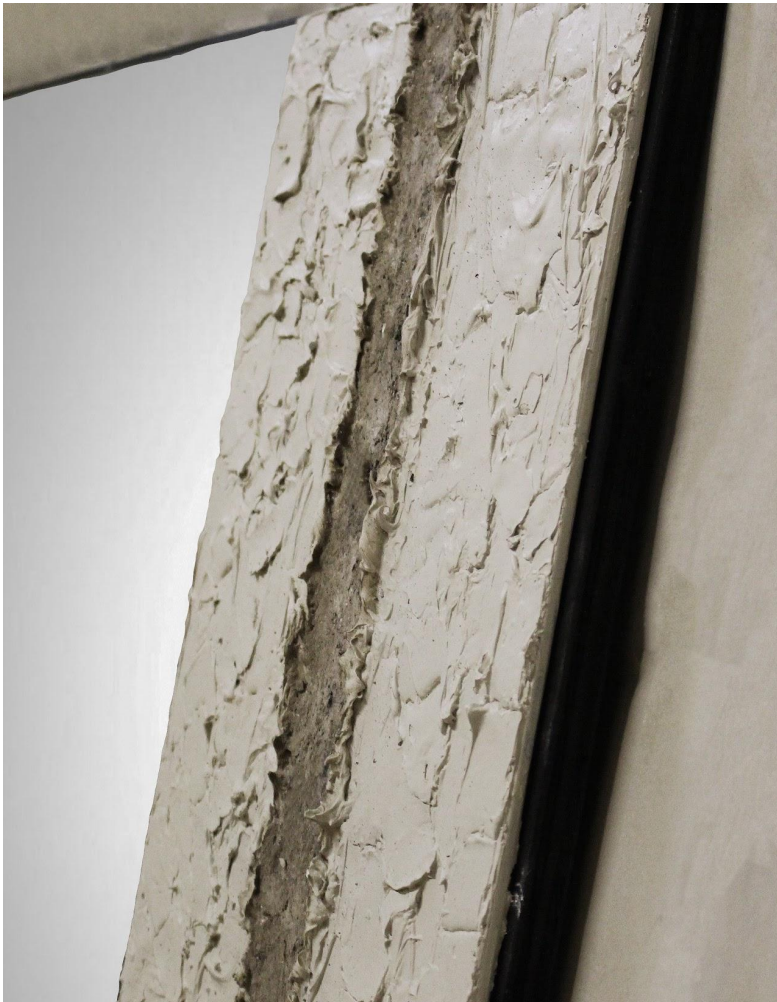
Dimensions:

30" W x 1" D x 20" H

"The Pompeii II Mirror consists of hand sculpted plaster and burnt ash that is hand-spread and worked."

*Burnt Ash shape and color is organic and may differ from piece to piece to keep uniqueness in the artists own hand and technique.

Lead-time 6-12 weeks



DOM LO COLOR



CUSTOM COLOR

